

A1

0cm 5cm

0inch 3inch

band / strap /
sangle

OTTO backpack
OOYAmade

SCHOUDERHENGSEL / SHOULDER STRAPS / BRETELLE
DEEL / PIECE K

OPTIE 1 en 2 / OPTION 1 and 2 / OPTION 1 et 2
1x buitenstof / exterior fabric / tissu extérieur

1x voering 1 / lining fabric 1 / doublure 1

1x buitenstof gespiegeld / exterior fabric mirrored / tissu extérieur en miroir

1x voering 1 gespiegeld / lining fabric 1 mirrored / doublure 1 en miroir



A2

0cm 5cm

0inch 3inch

naadwaarde inbegrepen
seam allowance included
valeur de couture comprise



OTTO backpack
OOYAmade
DEEL/ PIECE
FLAP VOORZAK / POCKET
RABAT POCHETTE
OPTIE 1 en 2 / OPTION 1 and 2
1x contraststof / contrast fabric
1x voering 1 / lining fabric



A3

0cm 5cm

0inch 3inch

Midden Centre

back
le
CE F
CKET FLAP /
E AVANT
nd 2 /OPTION 1 et 2
bric / tissu contraste
ric 1 / doublure 1



naadwaarde inbegrepen
seam allowance included
valeur de couture comprise

Magneetsluiting
Magnetic snap
Fermeture magnétique

Midden Centre

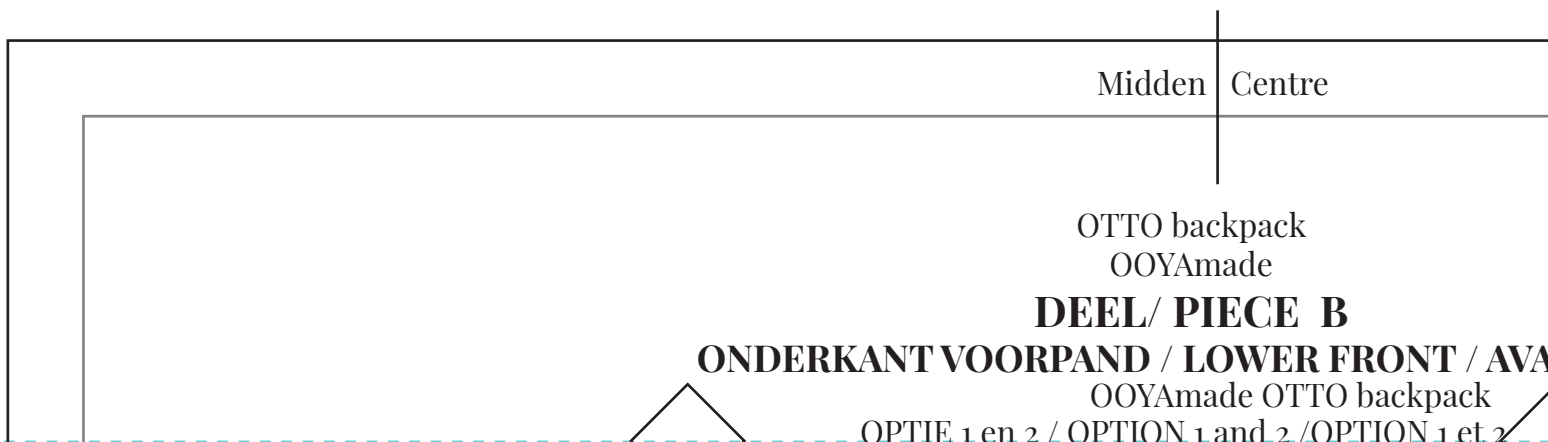
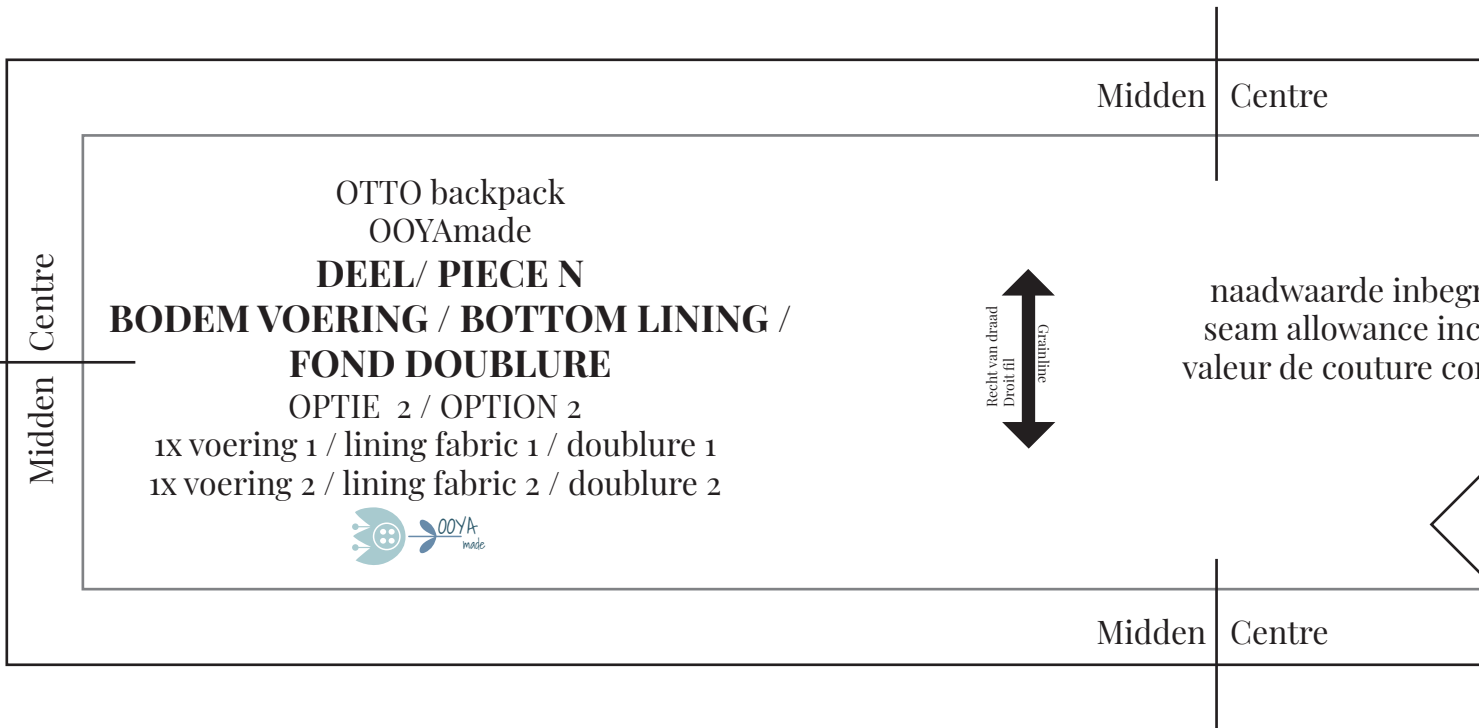
Marking triangle / marquage triangle
Merkeken driehoek /

OOYAmade OTTO backpack

A4

0cm 5cm

0inch 3inch



0cm 5cm

A5

0inch 3inch

open
included
prise

Midden
Middle

Midden Centre

OTTO backpack
OOYAmade
DEEL/ PIECE G
RITSSTROOK / ZIPPER PANEL
BANDE FERMETURE ÉCLAIR

OPTIE 1 en 2 / OPTION 1 and 2
OPTION 1 et 2
2x buitenstof / exterior fabric /
tissu extérieur
2x voering 1 / lining fabric 1 /
doublure 1
2x Style-vil / Foam



naadwaarde inbegrepen
seam allowance included
valeur de couture comprise

OOYAmade OTTO backpack

NT BAS

B1

0cm

5cm

0inch

3inch

band / strap / sangle

Stiklijn band
Sewing line Strap
Ligne de couture sangle

Midden
Centre

OTTO backpack
OOYAmade

DEEL / PIECE A

BOVENKANT VOORPAND / UPPER FRONT / AVANT HAUT

OPTIE 1 en 2 / OPTION 1 and 2 / OPTION 1 et 2
ix buitenstof / exterior fabric / tissu extérieur



naadwaarde inbegrepen
seam allowance included
valeur de couture comprise



Midden
Centre

OOYAmade OTTO backpack

band /

0cm 5cm

B2

0inch 3inch

band / strap /
sangle

OTTO backpack
OOYAmade

DEEL / PIECE L
DRIEHOEK / TRIANGLE

OPTIE 1 en 2 / OPTION 1 and 2 / OPTIE 1 et 2
1x buitenstof / exterior fabric / tissu extérieur
1x voering 1 / lining fabric 1 / doublure 1
1x buitenstof gespiegeld / exterior fabric mirrored / tissu extérieur en miroir
1x voering 1 gespiegeld / lining fabric 1 mirrored / doublure 1 en miroir
2x style-vil / foam



naadwaarde inbegrepen
seam allowance included

band / strap / sangle

Midden

Centre

band / strap / sangle

derhengsel / Shoulder strap /

Schouderhengsel / Shoulder strap /
bretelle

OTTO backpack
OOYAmade

DEEL / PIECE C
ACHTERPAND / BACK / DOS

OPTIE 1 / OPTION 1

1x buitenstof / exterior fabric / tissu extérieur
2x voering 1 / lining fabric 1 / doublure 1
2x style-vil / foam
1x style-vil (fix) / fusible foam

OPTIE 2 / OPTION 2

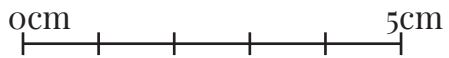
1x buitenstof / exterior fabric / tissu extérieur
1x voering 1 / lining fabric 1 / doublure 1
1x voering 2 / lining fabric 2 / doublure 2
2x style-vil / foam
1x style-vil (fix) / fusible foam



naadwaarde inbegrepen
seam allowance included
valeur de couture comprise

B3


0cm 5cm



0inch 3inch



Recht van draad
Droit fil
↔
Graining



OOYAmade OTTO backpack

B4

0cm 5cm

1x buitenstof / exterior fabric / tissu extérieur
0inch 3inch



naadwaarde inbegrepen
seam allowance included
valeur de couture comprise



Midden
Centre

Midden Centre

OOYAmade OTTO backpack

0cm 5cm

B5

0inch

3inch



Centre

OOYAmade OTTO Backpack

Centre



Midden Centre

OTTO backpack
OOYAmade

DEEL/ PIECE D

VOORZAK / FRONT POCKET / POCHE AVANT

OPTIE 1 en 2 / OPTION 1 and 2 / OPTION 1 et 2
1x buitenstof / exterior fabric / tissu extérieur
1x voering 1 / lining fabric 1 / doublure 1
1x Vlieseline / Fusible interfacing

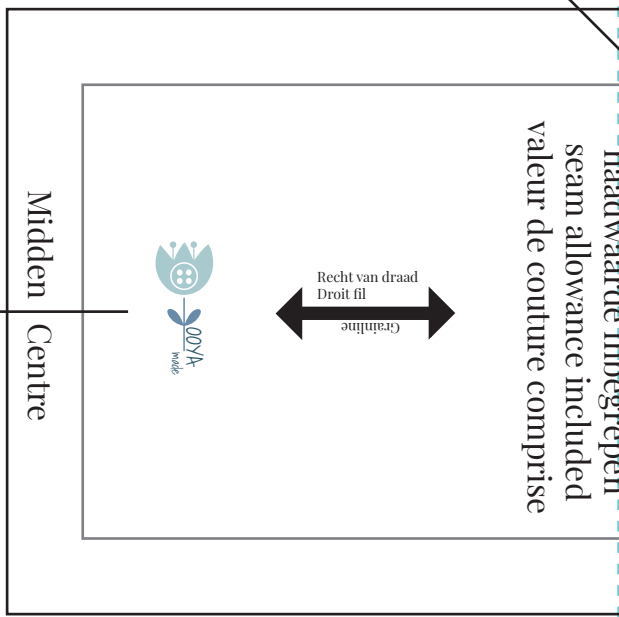
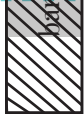
Magneetsluiting
Magnetic snap
Fermeture magnétique

OOYAmade OTTO backpack

0cm 5cm

0inch 3inch

Schaque
bretel
2

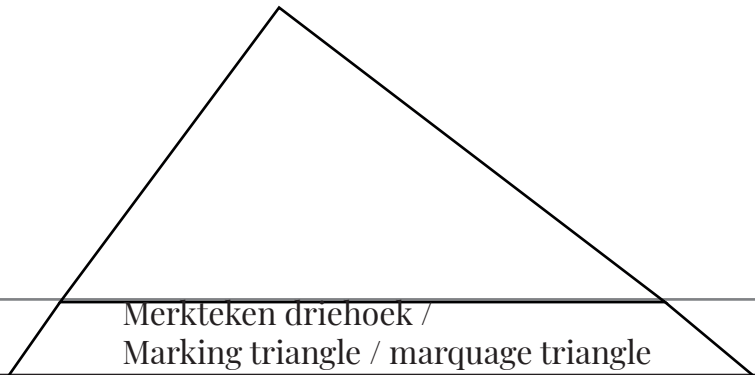


OOYAmade OTTO backpack

C3

0cm 5cm

0inch 3inch



Merkteken driehoek /
Marking triangle / marquage triangle

Midden Centre

2X voering 1 / lining fabric 1 / doublure 1
2X voering 2 / lining fabric 2 / doublure 2

OPTIE 2 / OPTION 2

DEEL / PIECE M
ZIJVLAK VOERING /
CÔTÉ DOUBLURE

OTTO backpack
OOYAmade

Midden Centre

Midden Centre

OOYAmade OTTO backpack

0cm 5cm

C4

0inch 3inch

Midden Centre

OTTO backpack
OOYAmade

**DEEL/ PIECE H
ZIJPANEEL / SIDE PANEL / CÔTÉ**

OPTIE 1 en 2 / OPTION 1 and 2 / OPTION 1 et 2
2x buitenstof / exterior fabric

of/or

2x voering 1 / lining fabric 1

of/or

2x voering 2 / lining fabric 2

2x Style-*vil* / foam

OPTIE 1 / OPTION 1

2x voering 1 / lining fabric 1



naadwaarde inbegrepen
seam allowance included
valeur de couture comprise

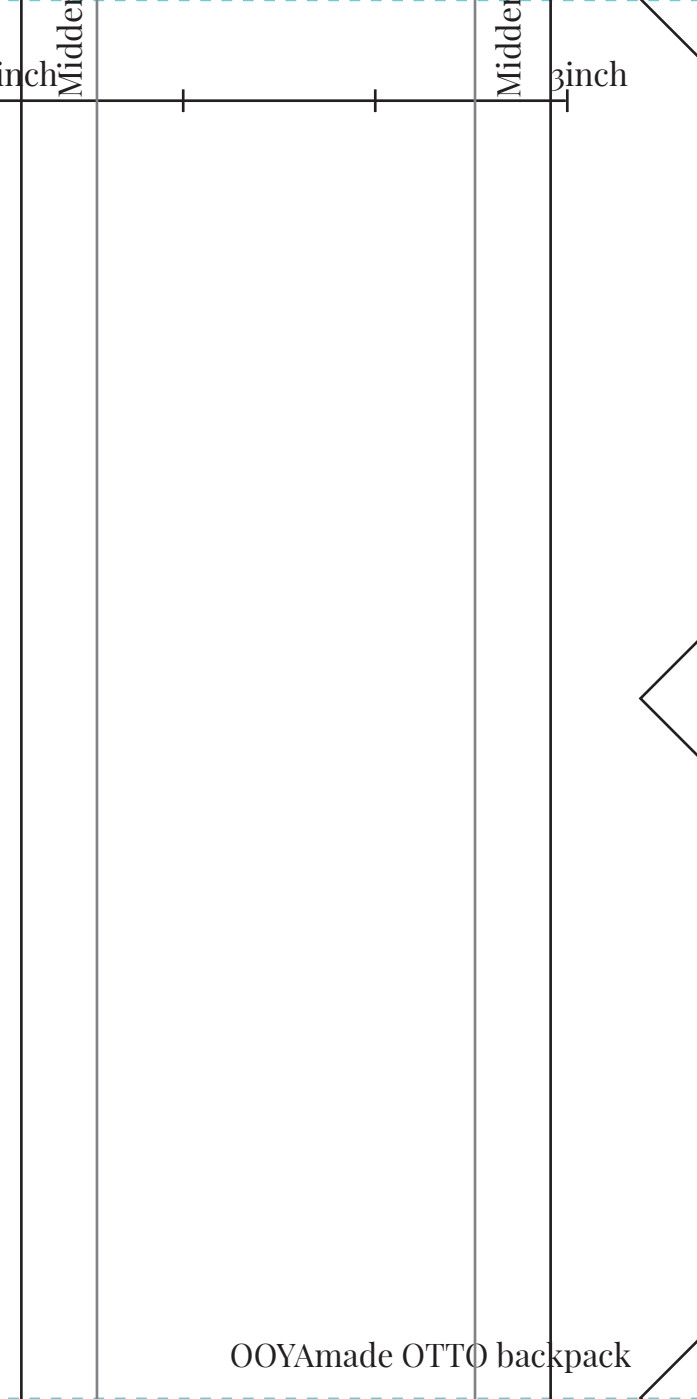
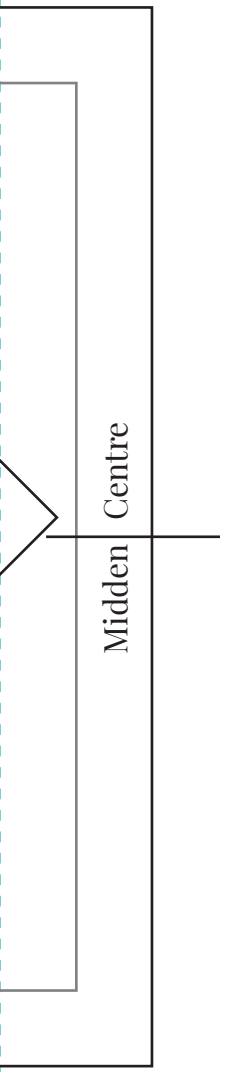
C5

0cm 5cm

0inch 3inch

Midden Centre

OOYAmade OTTO backpack



D1

0cm | | | | 5cm

0inch | | | 3inch

DEEL/PIECE E ONDERVERDELING / DIVIDER / COMPARTIMENT

OPTIE 2 / OPTION 2 / OPTION 2
1x voering 1 / lining fabric 1 / doublure 1
1x voering 2 / lining fabric 2 / doublure 2
1x Style-vil / foam



naadwaarde inbegrepen
seam allowance included
valeur de couture comprise

Midden | Centre

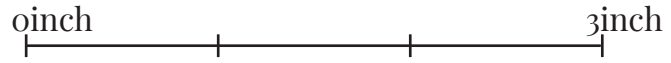
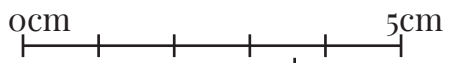
D2

0cm 5cm

0inch 3inch

Recit van draad
Droit fil
Grainline

D3



Midden Centre

OTTO backpack
OOYAmade

DEEL/ PIECE J **BODEM / BOTTOM / FOND**

OPTIE 1 en 2 / OPTION 1 and 2 OPTION 1 et 2
1x buitenstof / exterior fabric : tissu extérieur
of/or/ou

1x (nep)leer / (faux)leather / (simili)-cuir
1x Style-vil / Foam

OPTIE 1 / OPTION 1
1x voeringstof 1 / lining 1 / doublure 1

naadwaarde inbegrepen
seam allowance included
valeur de couture comprise



Midden Centre

0cm 5cm

D4

0inch 3inch

Midden Centre

OTTO backpack
OOYAmade

DEEL/ PIECE 1
ZIJZAK / SIDE POCKET / POCHE CÔTÉ

OPTIE 1 en 2 / OPTION 1 and 2 / OPTION 1 et 2
2x contraststof / contrast fabric / tissu contraste
2x voering 1 / lining fabric 1 / doublure 1



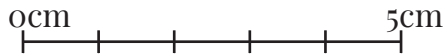
naadwaarde inbegrepen
seam allowance included
valeur de couture comprise



Midden Centre

D5

0cm 5cm



0inch

3inch

Midden Centre

